

The lavish and extremely well-appointed theatre room features a Jamo THX Ultra 2 speaker system including two subwoofers, a 254cm Screen Technics screen, and a Barco DLP projector.

# Lap Of Luxury

Photography by Ray Messner



**This lavish home features the ultimate home theatre to match, as well as integrated security and a vast multiroom audio system.**

With a home of this scale, size, and attention to detail, it's no surprise that Victorian custom installation company Cableman was called in at the planning stage to ensure the perfect delivery of integrated home technology, including a massive home theatre, multiroom audio, an advanced security system and a detailed control solution.

Joshua Holko from Cableman says "we put an enormous effort into project management with this home. We were involved with the home from day one—our ability to project manage and integrate with the other trades, which we do very well on a large scale project like this, was vital to the success of the home."

In this case, the clients had very clear ideas about what they wanted in their expansive new home. "They had a pretty good idea of what they needed in the house," Joshua says. "They had a very good level of knowledge and gave us a very clear description of what they wanted and how they wanted it to work. It was all about enhancing their lifestyle and not complicating it."

All up, the project took two years of construction—not long at all, when you consider the size and luxurious finish of the completed home.

Because the client had such a high level of knowledge about integrated home systems, it should come as no surprise that they specified their home theatre and multiroom audio system to an incredibly high level. Joshua explains: "We were asked to provide a high quality 7.2 channel home theatre system offering the best image and sound resolution, as ►



Sound and Image 21



The master bedroom has its own source electronics, including Marantz DVD player and Foxtel digital box. In such a large house, it just wasn't feasible to have components such as DVD players located remotely.

well as a high quality multiroom audio system, several plasma displays around the house as well as a second surround system in the family/living room and a simple, easy to use interface to control all these elements."

The home theatre, in particular, is best described as spectacular. "The client requested that the home theatre be a THX Ultra system, so we installed a Jamo D7 THX Ultra 2 system. This is the ultimate THX reference level—the system must have two subwoofers, with side surround speakers as well as the usual surround speakers," Joshua says.

**"The client requested that the home theatre be a THX Ultra system, so we installed a Jamo D7 THX Ultra 2 system. This is the ultimate THX reference level."**

Given how much sound a THX Ultra 2 system can output, it's hardly surprising that the theatre room sports acoustic treatments, with acoustic panels placed at strategic points to reduce reflections and bass nodes. The cabinetry in the theatre was also designed to allow easy rear access for cabling and any potential upgrades. The room comfortably seats ten people.

To match the impressive speaker system, the source electronics are from the Marantz reference series, there's a digital STB, and the room is controlled via a Crestron colour RF touchscreen remote.

"The system also uses a 254cm (100 inch) Stewart GreyHawk grey screen, as it provides the best picture quality, teamed with a very high specification Barco DLP projector," Joshua says. Additionally, the projector was ISF (Imaging Science Foundation) calibrated to ensure the best possible image. This calibration system began with the ISF company in the US, which licenses its technology and methods to installers and dedicated calibration service providers. It uses a series of standardized tests and equipment, plus fine-tuning, for the most accurate picture reproduction. Joshua explains that Cableman is now offering ISF calibration to all its clients.

"The home theatre is state-of-the-art. Picture quality, sound quality—it's all first class. And the ISF calibration was vital to that," he says.

Beyond the theatre room, the family room boasts a 155cm (61 inch) Marantz plasma screen and another THX speaker system—this is a standard THX system, however, with only one subwoofer. "The client specified THX systems in both situations."

Joshua also points out the unique cabinetry in the family room. "This was custom made, and was designed to house the plasma in such a way



Left: The 155cm plasma display in the family room is cleverly integrated with custom cabinetry so that only the display is visible.

Middle and below: The aesthetic style of the home necessitated that, for the most part, speakers and other electronics be as concealed as possible.

that only the screen is visible—the bevel and fascia is invisible.”

Apart from the stunning theatre room and the family room, the home has a total of 12 zones of audio, reflecting the impressive size of the residence—apart from the main living areas, there’s also a huge basement and attic area, as well as a pool and poolhouse. “There’s even a waterslide!” Joshua says.

These 12 zones are fed by an Imerge digital music server and three AM/FM digital tuners. “The Imerge is a three zone model so it can send up to three streams of music simultaneously around the house.”

“The multiroom audio system itself is by Opus. We chose to put in the Opus as it’s the only keypad system capable of providing text feedback on the control panel.” This text-based system allows anyone in the home to quickly and easily select the music source, from anywhere in the house. “The user can scroll through a list of artists, albums and genres, have it all come up on the keypad and select what they want to listen to,” Joshua says.

Throughout the rest of the home the audio is distributed via Sonance in-ceiling speakers, both indoors and outdoors. “Sonance is a very high quality brand and the company specializes in in-ceiling and in-wall speakers,” Joshua adds. “Sonance is renowned for its flushmount speakers. They are very easy to install and very reliable—this is important when you’re dealing with things that go in the wall. We also put Sonance Extreme speakers in the bathroom and Sonance Mariner speakers in the outdoor areas, such as in the poolhouse and around the pool.”

The home’s systems, except for lighting, are controlled via a Crestron system. Joshua explains that the interface for this system consists of: “a two-way RF remote (in the theatre) and three wall-mounted touchscreens in the kitchen, basement and master bedroom. These touchscreens control the AV network, the security system and can also display security camera footage.”

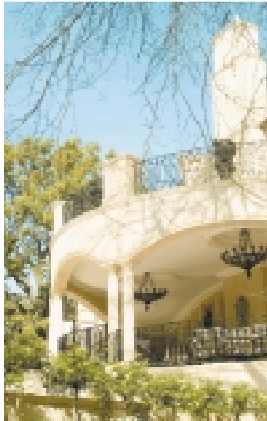
One unique aspect of this particular Crestron system is its use of logos. “We go to a lot of trouble to do this. For instance, we use the National Geographic logo so the client can see what channel he’s selecting—we did that for Foxtel, free-to-air, radio stations and so on,” Joshua explains.

“This Crestron system also has an Ethernet card so the owner can control the home from





Sonance speakers are used extensively throughout the house. Weatherproof Sonance speakers were used in the outdoor areas around the pool, while in-ceiling, flushmount speakers have been placed in all other areas, including the balconies.



a computer anywhere—if he's overseas, he can check the security cameras and the security log, he can monitor who has come and gone from the house because of the keyless entry, and he can do it from anywhere in the world.”

Given that it is such a large residence, most of the source equipment has been placed locally; each room has its own digital set-top box, DVD player and VCR, for example, as it simply wasn't practical to locate all of the source electronics in a distant communications room. All other electronic equipment, such as the Imerge soundserver that drives the multiroom audio system, is located in the equipment rack in the family room.

“It was all about ease-of-use for the family,” Joshua says. He concludes that the key to achieving ease of use in such a large, lavish home, is becoming involved very early in the building process. “It's the ideal way to do it. Basically, the earlier we get involved in the process the most helpful we can be, so starting from scratch is the best way to make sure the client gets what they want.” **SI**

**SYSTEM: CINEMA** • Stewart 254cm 16:9 Greyhawk Reference Screen • Barco Cineversum 70 DLP Projector • Jamo D7 THX Ultra II 7.2 speaker system • 2 x Jamo D7 THX Ultra II Subwoofer • Marantz Reference SR-12S1 THX Ultra II Amplifier/Receiver • Marantz Reference SR-12S2 DVD player, Panasonic HDD set-top box • Panasonic 6-Head Hi-Fi VHS • Foxtel Digital decoder • Crestron STXi-1700 CXP 2-way RF touchscreen • 2 x Xantech IR blocks **MULTIROOM EQUIPMENT** • Crestron Pro 2 Control Processor, Crestron STXi-1700 CXP 2-Way RF touchscreen • Crestron TPS5000 LVW Wall Mount Touch Screen • 2 x Crestron TPS3000 wall mount touchscreen • Panasonic DVD recorder with HDD • Sony 6-Head Hi-Fi VHS • Foxtel Digital Decoder • 2 x Opus MCU500 multiroom controls with 2 x AM/FM stereo digital tuners • Opus SCU500 serial control interface • 8 x Opus DZM20 amplifier • 8 x Opus keypads • 6 x Pairs Sonance 623TR in-ceiling spks • 2 x Pairs Sonance Extreme XT in-ceiling spks • 2 x Sonance Mariner 100 spks • Marantz DH9300 3-Zone hard disk music server • **FAMILY ROOM** • Marantz 155cm Plasma • Marantz SR8500 receiver • 3 x Jamo D6 THX spks • Jamo D6 THX sub • 2 x Sonance Cinema II THX in-ceiling spks • 2 x AV24 AV distributors • **MASTER BEDROOM/STUDY/ENSUITE** • Fujitsu 107cm (42 inch) plasma • Marantz DV4300 DVD player • Panasonic HDD set-top box • Panasonic VHS • Foxtel digital decoder • Marantz RC9200 universal touchscreen remote • **CUSTOM INSTALLER:** Cableman, Level 1/1227 Glenhuntly Road, Glenhuntly VIC, 03 9572 8900 [www.cableman.com.au](http://www.cableman.com.au)

